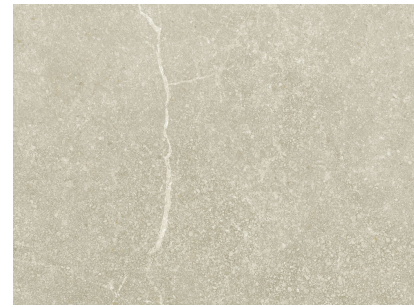


TU.SOAPSTONE TAN

| | |
|-----------|--------------|
| FORMAT | 30x60 (C) |
| THICKNESS | 9.000 |
| PRODUCT | PORCELANICO |
| TYPE | GL Esmaltado |
| GROUP | Bla |

APPLICABLE STANDARD EN 14411 ANNEX G



| TESTS | | RESULTS | |
|-------|---|-----------------------------|--|
| | UNE-EN ISO 10545-2 DIMENSIONAL FEATURES | | COMPLIES WITH THE STANDARD |
| | UNE-EN ISO 10545-3 WATER ABSORPTION | | <= 0,5 % |
| | UNE-EN ISO 10545-4 MODULUS OF RUPTURE | BREAKING STRENGTH | - |
| | | BENDING STRENGTH | - |
| | UNE-EN ISO 10545-6 RESISTANCE TO DEEP ABRASION (MM3) | | NOT APPLY |
| | UNE-EN ISO 10545-7 RESISTANCE TO SURFACE ABRASION | | PEI III |
| | UNE-EN ISO 10545-8 LINEAR THERMAL EXPANSION | | <7,0 x 10 ⁻⁶ °C ⁻¹ |
| | UNE-EN ISO 10545-9 THERMAL SHOCK RESISTANCE | | RESISTS |
| | UNE-EN ISO 10545-11 CRAZING RESISTANCE | | RESISTS |
| | UNE-EN ISO 10545-12 FROST RESISTANCE | | RESISTS |
| | UNE-EN ISO 10545-13 CHEMICAL RESISTANCE | AMMONIUM CHLORIDE 100 G/L | A |
| | | SODIUM HYPOCHLORITE 20 MG/L | A |
| | | HYDROCHLORIC ACID 3% | COMPLIES WITH THE STANDARD |
| | | CITRIC ACID 100 G/L | COMPLIES WITH THE STANDARD |
| | | POTASSIUM HYDROXYDE 30 G/L | COMPLIES WITH THE STANDARD |
| | UNE-EN ISO 10545-14 STAIN RESISTANCE | GREEN AGENT IN LIGHT OIL | 5 |
| | | IODINE SOLUTION IN ALCOHOL | 5 |
| | | OLIVE OIL | 5 |
| | UNE 41901:2017 EX SLIP RESISTANCE (PENDULUM) | | - |
| | DIN 51130 CRITICAL ANGLE OF SLIP (INCLINED PLATFORM) | | - |
| | DIN 51097 CRITICAL ANGLE OF SLIP. WET-LOADED BAREFOOT AREAS | | - |
| | (PTV) DRY CLASSIFICATION ACCORDING TO PENDULUM TEST VALUES (PTV) DRY | | - |
| | BS7976 (PTV) WET CLASSIFICATION ACCORDING TO PENDULUM TEST VALUES (PTV) WET | | - |
| | ANSI A326.3 DYNAMIC COEFFICIENT OF FRICTION (DCOF) OF RIGID FLOORS. | | - |