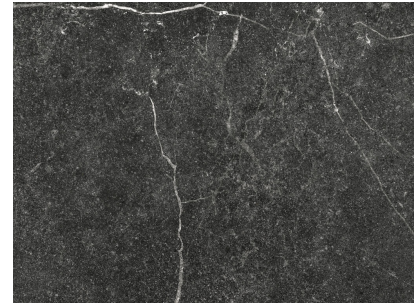


### TU.SOAPSTONE GRAPHITE

FORMAT	60x60
THICKNESS	9.500
PRODUCT	PORCELANICO
TYPE	GL Esmaltado
GROUP	Bla

APPLICABLE STANDARD EN 14411 ANNEX G



TESTS		RESULTS	
	UNE-EN ISO 10545-2 DIMENSIONAL FEATURES	COMPLIES WITH THE STANDARD	
	UNE-EN ISO 10545-3 WATER ABSORPTION	<= 0,5 %	
	UNE-EN ISO 10545-4 MODULUS OF RUPTURE	BREAKING STRENGTH	-
		BENDING STRENGTH	-
	UNE-EN ISO 10545-6 RESISTANCE TO DEEP ABRASION (MM3)	NOT APPLY	
	UNE-EN ISO 10545-7 RESISTANCE TO SURFACE ABRASION	PEI III	
	UNE-EN ISO 10545-8 LINEAR THERMAL EXPANSION	<7,0 x 10 <sup>-6</sup> °C <sup>-1</sup>	
	UNE-EN ISO 10545-9 THERMAL SHOCK RESISTANCE	RESISTS	
	UNE-EN ISO 10545-11 CRAZING RESISTANCE	RESISTS	
	UNE-EN ISO 10545-12 FROST RESISTANCE	RESISTS	
	UNE-EN ISO 10545-13 CHEMICAL RESISTANCE	AMMONIUM CHLORIDE 100 G/L	A
		SODIUM HYPOCHLORITE 20 MG/L	A
		HYDROCHLORIC ACID 3%	COMPLIES WITH THE STANDARD
		CITRIC ACID 100 G/L	COMPLIES WITH THE STANDARD
		POTASSIUM HYDROXYDE 30 G/L	COMPLIES WITH THE STANDARD
	UNE-EN ISO 10545-14 STAIN RESISTANCE	GREEN AGENT IN LIGHT OIL	5
		IODINE SOLUTION IN ALCOHOL	5
		OLIVE OIL	5
	UNE 41901:2017 EX SLIP RESISTANCE (PENDULUM)	-	
	DIN 51130 CRITICAL ANGLE OF SLIP (INCLINED PLATFORM)	-	
	DIN 51097 CRITICAL ANGLE OF SLIP. WET-LOADED BAREFOOT AREAS	-	
	(PTV) DRY CLASSIFICATION ACCORDING TO PENDULUM TEST VALUES (PTV) DRY	-	
	BS7976 (PTV) WET CLASSIFICATION ACCORDING TO PENDULUM TEST VALUES (PTV) WET	-	
	ANSI A326.3 DYNAMIC COEFFICIENT OF FRICTION (DCOF) OF RIGID FLOORS.	-	