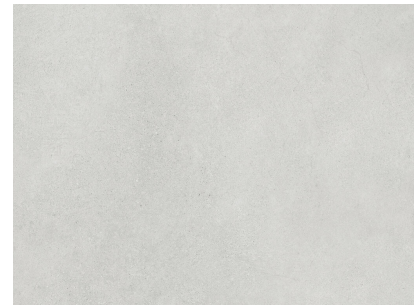


TU.INTEGRA PEARL

FORMAT	90x90(20mm)
THICKNESS	20.000
PRODUCT	PORCELANICO
TYPE	UGL No esmaltado
GROUP	Bla

APPLICABLE STANDARD EN 14411 ANNEX G



TESTS		RESULTS	
	UNE-EN ISO 10545-2 DIMENSIONAL FEATURES		COMPLIES WITH THE STANDARD
	UNE-EN ISO 10545-3 WATER ABSORPTION		< = 0,5 %
	UNE-EN ISO 10545-4 MODULUS OF RUPTURE	BREAKING STRENGTH	>10000 N
		BENDING STRENGTH	35-45 N/mm2
	UNE-EN ISO 10545-6 RESISTANCE TO DEEP ABRASION (MM3)		< 130 mm3
	UNE-EN ISO 10545-7 RESISTANCE TO SURFACE ABRASION		NOT APPLY
	UNE-EN ISO 10545-8 LINEAR THERMAL EXPANSION		<7,0 x 10-6 °C-1
	UNE-EN ISO 10545-9 THERMAL SHOCK RESISTANCE		RESISTS
	UNE-EN ISO 10545-11 CRAZING RESISTANCE		RESISTS
	UNE-EN ISO 10545-12 FROST RESISTANCE		RESISTS
	UNE-EN ISO 10545-13 CHEMICAL RESISTANCE	AMMONIUM CHLORIDE 100 G/L	A
		SODIUM HYPOCHLORITE 20 MG/L	A
		HYDROCHLORIC ACID 3%	COMPLIES WITH THE STANDARD
		CITRIC ACID 100 G/L	COMPLIES WITH THE STANDARD
		POTASSIUM HYDROXYDE 30 G/L	COMPLIES WITH THE STANDARD
	UNE-EN ISO 10545-14 STAIN RESISTANCE	GREEN AGENT IN LIGHT OIL	5
		IODINE SOLUTION IN ALCOHOL	5
		OLIVE OIL	5
	UNE 41901:2017 EX SLIP RESISTANCE (PENDULUM)		CLASE 3
	DIN 51130 CRITICAL ANGLE OF SLIP (INCLINED PLATFORM)		-
	DIN 51097 CRITICAL ANGLE OF SLIP. WET-LOADED BAREFOOT AREAS		-
	(PTV) DRY CLASSIFICATION ACCORDING TO PENDULUM TEST VALUES (PTV) DRY		-
	BS7976 (PTV) WET CLASSIFICATION ACCORDING TO PENDULUM TEST VALUES (PTV) WET		-
	ANSI A326.3 DYNAMIC COEFFICIENT OF FRICTION (DCOF) OF RIGID FLOORS.		-